

**SPRING**

**Volume XXXIII, Issue 1**

# Ameraucana Bulletin



Ameraucana Breeders Club, 33878 Hwy 87, California, MO 65023-3911  
www.ameraucana.org

**Connie "Jean" Ribbeck**

President

**Michael J. Muenks**

Secretary/Treasurer

**Jerry De Smidt**

Director - North Central

**Harold Knapp**

Director - Northeast

**Paul Smith**

Director - South Central

**Tina Dinkins**

Director - Southeast

**Jeanine McKee**

Director - West

**Don Cable**

Honorary Vice President

**Mike Gilbert**

Honorary Vice President

**Susie Winder &**

**John Blehm**

ABC Forum Administrators

## President's Report, Connie "Jean" Ribbeck

Spring is coming!!!! I have cleaned the incubators (again) and I am still restocking breeding pens. This year I have decided to sell on a very limited basis and focus on smaller hatches with only the best birds. I will also be working on some project colors. I still plan to attend shows though. This will free up some of my time for my family and time I need to put into the Club's needs.



Recently I attended a show in Stockton, CA where I was able to speak to the current Chairman of the Standards Committee of the APA. We had a pleasant conversation which lasted about half an hour and we discussed the "lavender" variety of Ameraucana. Mr. Leonard wasn't aggravated or distressed and showed no outward hostility like officers of another poultry club last year with the mere mention of the word. He expressed that the Committee would be interested in reading a proposal from the ABC on naming our new variety lavender instead of self-blue, with the Committee in the future. He stated that they were in no way set against the name.

Later that evening I sat with a majority of the rest of the APA judges that had attended the show. I was asked by one of them, "Why do you want to get this new variety accepted?" I told him that's what my members wanted. He then asked me, "Well, why isn't anyone showing them?" This made me pause. I had not brought any to the current show and one of the two birds that were shown as lavender was a blue. He then brought up another point; there are many varieties of different breeds in the Standard of Perfection which had been hastily entered and are no longer around.

I have given this issue a lot of thought since I returned home. My main concern now is that the birds are not being shown on a regular basis. The APA is not seeing that we are serious about breeding and showing this variety. My excuse for not showing was that I didn't want to put an inferior specimen out there for viewing. Have we put the cart before the horse? Or, painted the barn before it has been finished?

It was recently brought up on the forum about getting splash and lavender varieties accepted this year. Michael sent me a list of members that have been breeding the lavender bantams and large fowl. It doesn't look as though we have the numbers to get the basic qualifications done until **after** the end of 2012. So, we have at least another year to work on the lavender variety.

We can discuss the lavender variety on the ABC Forum further. Any comments or suggestions are welcome.



### Features this Issue:

Page 2 – District Reports

Page 5 – Shafting in Silvers

Page 6 – ABA and APA

Yearbook Ads

Page 7 – Buff Culling Tips

Page 7 – Meets

Page 8 – Getting to Know

Page 10 – Meet Reports

**North Central District, Jerry De Smidt, Director**

The winter here in the Midwest has been very mild and we have not had the heat on in the barn at all this year. With the mild temperatures and very little snowfall we have had lots of time to do things outside. We have cut down several trees in the pond area for the ducks and geese, kept the pens cleaned, and no frozen manure. We have turned the lights on and the chickens like it very much for they are laying like crazy. I am looking forward to seeing all the chicks grow out to be nice young adults. The ducks and geese have just started laying and we will start setting eggs from them the first part of March for end of March hatch.

I have taken a new job at CRI (Genex) as a Sire handler that will be year round and I also have different work hours. I work from 5 am to 1 pm at Genex and then milk cows from 8 pm to 12 pm for a neighbor. Jake takes care of most all of the chores here at Woodhaven. This year we have decided not to sell chicks, eggs, or started birds, but will be selling adult stock to the shows that we will be attending.

It would be great if we could get several hundred birds at our National show this year in MO.

**Western District, Jeanine McKee, Director**

Sharon York's Blue Rooster

I hope this newsletter finds everyone well, and that your birds held up during winter snows, ice, and the flooding that so many areas saw recently.

We lucked out with a very mild winter. I think I carried hot water out to defrost waterers a total of three days this year. I really can't complain about that. We still have a couple more weeks where we could get below freezing at night, but that's about it.

Winter was so mild; I started hatching early this year, and am already almost done. I did let go of my large fowl Ameraucana this year, but still have my bantams, and plan to continue working with them.

If I do not hear from anyone to request a meet elsewhere, I plan to place the Western District meet at the Pacific Northwest Poultry Association's Winter Classic show the third weekend in October. Hope to see you there!!!

**Southeast District, Tina Dinkins, Director**

We have been having strange weather here in the southeast. Right now, it is like spring. The chickens feel it and I am feeling it. So are the spring bulbs. My crocuses bloomed last week and I have daffodils and hyacinths blooming now. The weather people are saying this is like the weather that happened before the blizzard of 1993. Well, I don't remember the warm spell, but I certainly remember the blizzard. We got 13 inches of snow and it was great. I would sure like some snow, but worry about the flowering trees freezing up. The children really need snow; they rarely see it here like I did when I was a child.

One nice thing about this warm weather is no freezing water bowls and dishes! The chickens still have greens to peck on in the yard and more bugs are waking up. How are everyone's chickens doing? Have they started laying? Mine are getting started quite nicely. I guess they think it is spring.

I have chicks coming this week, laying hens. I have some bantam Ameraucana eggs in the incubator thanks to Jeanine McKee, the western district director. Cross your fingers that they will do well.

## Southeast District Report, continued

It has been quiet in the Southeast. I haven't had to place any meets. There have been a few phone calls requesting birds, eggs and other information. I sent them in the right direction and hope they all have new Ameraucana by now.

Don't forget to send in your membership renewal forms. You should have received an orange form with the last newsletter. If you have any children, grandchildren, nieces, nephews, or even neighborhood children, please encourage them to be a part of our club. Children love chickens and this is a great opportunity for them to learn about Ameraucana. I am very proud of all the juniors we have and wish you all good luck this New Year.

## South Central District, Paul Smith, Director

Greetings from the South Central District!

Hatching season is well underway. Our third hatch will be completed before this is printed. Our first hatch was very small. The second was much better. The third one will be sent out to start filling chick orders. Presently we are about 50% booked for our 2012 hatch.

This is the South Central District's turn to host the National Meet! It will be hosted by The Missouri State Poultry Association at their fall show on October 27, 2012, in Sedalia, Missouri at the State Fairgrounds. This is a double judged show. The first judging will be our National Meet, and the second judging will be the Missouri State Meet. It is a one day show-so it will be a fast pace to get everything done. An egg contest will be held for hens and pullets in both bantams and large fowl. Plans for an Ameraucana Seminar are underway. Michael Muenks is about 45 miles east of Sedalia. Michael and Anastasia have offered their place for a club get together.

I have tried to call Areatha Mahan to discuss possible options for national meet awards. Unfortunately, the old number I have is a non-working number. I have written a letter to her-waiting on a call from her or a returned letter in the U.S. mail. The day this was written she called! She does an excellent job of painting. Most members liked the painted plates and mugs that we used as awards for the 2005 National Meet.

It's past time for a different show for our district meet. We have had it at Shawnee, Oklahoma every year except one since I have been director. The recently added new show at Fayetteville, Arkansas looks very promising. It is also a double judged show. I am planning on setting the first judging as our South Central District Meet and the second judging as the Arkansas State Meet. It is November 3, 2012, the weekend following our National Meet. I am considering requesting an Oklahoma State Meet at Shawnee, for their December 8 and 9, 2012 show. Any South Central District member desiring an Ameraucana meet at a show they attend, needs to let me know in time to get it in the newsletter before the shows entry deadline.

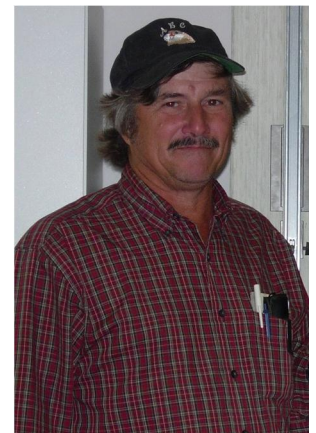
Hope everyone is getting blessed with a great hatching season.

## Electronic Bulletin

Over the last several years several members have requested to receive their Bulletins in an electronic format. If you would like to receive your Bulletins via E-mail, please let Michael know if you would like to begin receiving your Ameraucana Bulletin electronically and he will add your name to the list.



Sharon York's 6 week-old black Ameraucana



Cindy Aultman's Lavender chicks



**Northeast District, Harold Knapp, Director**

Hello to all my poultry friends. It's hard to believe, in the middle of February, that we are thinking spring already. Bring it on, I have had enough cold weather!

Here in Western New York we have had very little snow this year (unusual), and the temperature has been up & down from below freezing to near 40 degrees, often in the same week. This tends to be rough on people and birds.

Many of you have hatches well underway, so far my Ameraucana have not been fertile. I have hatched a few buff Chanteclers, and 1/2 dozen large single combed Rhode Island Reds. I will set some white Dorkings at the end of February and I will wait a bit and try Ameraucana and single combed Rhode Island Red bantams again.

I would like to remind our members to make their meet requests so they can be placed and published in our Bulletin. I have contacted several clubs seeking meets, had one club responded quickly and some have not responded at all. Two were spring shows and two are fall shows. There is still time for the fall shows, but if I don't hear from them saying they will accept an Ameraucana meet, I will not place one with them.

If you want a meet for a fall show this year, E-mail me the show, contact person's E-mail address, and show dates. This process takes some time, so don't wait till the last minute.

**From Under the Black Locust, Michael Muenks**

Greetings to the Ameraucana Breeders Club! As you read this issue of the Ameraucana Bulletin your hatching season will be well underway and or possibly complete. Due to a series of career choices I had to disperse my flock of Ameraucana a couple of years ago and now I am rebuilding a breeding program. As part of the process of starting over, I have read once again what I think is one of the best books in the poultry world, Ralph Sturgeon's Starting Where You Are With What You Have: A Guide to Poultry Breeding. This gem of a book is packed with wisdom and guidance that everyone should be reminded of from time to time. One can find copies of the book through internet book sellers on occasion. One of our Club members found me a copy several years ago in England. I am starting over my Ameraucana breeding program with a small number of black large fowl, wheaten, buff, white, and black bantam Ameraucana that I picked up at the Club's National Meet last fall and some hatching eggs. I have received a lot of scrambled eggs lately. My next batch will come from a member that is within driving distance. I am really excited to be back raising Ameraucana and plan to show at our 2012 National Meet. I have managed to piece together several breeding pens from the shambles I arrived home to. Unfortunately, much of our set up was literally pushed into a pile and or disassembled and randomly scattered about, making a lot of work. I am really tired of tripping over wire and getting tangled in netting as I walk around, feed, and repair. I am planning to take advantage of the shambles and look at a total redesign. I am particularly interested in poultry cotes and very tall coops. In addition, I may include some cordwood walls as I build. Who knows what I will end up with!

The Ameraucana Breeders Club 2012 National Meet will be held in Sedalia, MO at the Missouri State Fairgrounds, October 27, 2012 at the Missouri State Poultry Association's Fall Double Show. Please attend on planning to attend the show. We will have a great time. The Club is planning an egg competition, sale area, and our first Ameraucana Seminar. Many of our Junior members competed in the Open Class at our National Meet in 2011 and showed very impressive Ameraucana. I hope that we will have another year of good Junior participation in 2012 at the National Meet.

## Shafting in Silvers, by John Blehm and Jerry Segler via the Forum

*In this issue of the Bulletin I am trying something a little different. There are many topics on the Forum that could be developed into what would be interesting articles for the Bulletin. I hope you will enjoy my attempts as a "ghostwriter" for these conversations . . . Michael*

I've made some progress over the years reducing the amount of shafting on the silver females...bantams and large fowl. I think out-crosses to black have helped the type of silver. The outcross to black I made was basically made to improve the type and size of silvers. With it came some eumelanin enhancers (melanism) causing extra dark and black areas on some silver birds even though they had been bred back to e+/e+. A melaniser may have helped darken the feather shafts which would reduce "shafting", but others melanisers needed to be bred out.

Figure 1



Correct Phenotype Silver Chicks

I'm a big fan of culling day-old chicks, and if you know what to look for, you can save a lot of feed and brooder space by doing so. The chicks can be sold to those that just want backyard chickens. With silver chicks cull those with black or extra dark breasts like those in the Figure 2 and those with extra dark backs as shown in Figure 3. Figure 1 demonstrates the proper phenotype for a day-old silver Ameraucana chick. From the back side the chicks don't

look much different. Some variation is normal, but I've noticed the chicks with the extra dark backs are the ones with dark/black breasts lead to dark feathered adults. I generally give all the chicks a visual check as I look down on them and then flip them over to check for feather/stubs on their shanks. I happened to notice a dark breast on a silver chick early in the 2010 hatching season and started checking all chicks for dark breasts. The dark pullet in Figure 4 is probably from an early hatch before I started culling the dark breasted chicks.

I have read many places that one can sex striped chicks, so I tried it this year and it works! The females have darker dorsal stripes that continue onto their heads and males have lighter stripes that do not reach the head.

Culling doesn't stop with day-old chicks and one should continue to cull as the birds mature and lastly just before setting up breeding pens. Figure 4 and Figure 5 are head and back shots of two pullets. The one labeled Figure 4 is too dark on top of her head, has too much shafting and has solid black feathers on her back. She evidently carries a melaniser that is causing black to appear in areas that it shouldn't. The other pullet in Figure 5 has much better color and could be used to breed from. Note the nicely stippled feathers. Since stippling quality is only visible on silver hens and pullets, it is important to track their male offspring.

Figure 4



Dark Pullet

Figure 5



A Better Pullet

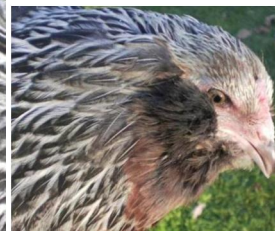


Figure 2



Incorrect phenotype – dark breast

Figure 3



Incorrect phenotype – dark back



John Blehm's BV Silver  
Bantam Pullet at the 2011  
National Meet

Photos by John Blehm

### Club Notes

The deadline to submit articles, ads, reports, meet requests, etc. for the next bulletin is May 15, 2012 and need to be sent to the club secretary.

Bulletin advertisements are free to all members!

**We now take PayPal!**  
To send payments use  
[purchases@ameraucana.org](mailto:purchases@ameraucana.org)

### Club Merchandise

1982 Club Handbook - \$5

2005 Club Handbook - \$5

ABC 4" Patch 1 for \$3 or 2 for \$5.50.



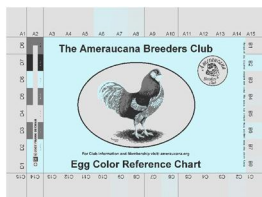
Bulletins 1979-1984 - \$30

Bulletins 1985-1993 - \$35

Breeders Directory - \$2

### Egg Shell Reference Chart

1 for \$3 or 2 for \$5



Make Checks Payable to the Ameraucana Breeders Club and send to the club secretary.

## ABA and APA Yearbook Ads

It is hard to believe that it is APA and ABA Yearbook Ad time again, but it is! If you would like to place an ad on the club page for either yearbook please send a check made out to the ABC. Checks will not be cashed until we have received 6 ads. We can have multiple pages of ads, but for both the ABA and APA we must have them in lots of six per page in order to have a full page. The ads are 2 inches by 2 inches. You may buy double ads, but the price also doubles! The cost of the ABA ad is \$20.00 for a 2" x 2" ad and the cost for the APA ad is \$16.00 for a 2"x2" ad.

Please send your ad electronically to Michael at [Michael@bantamhill.com](mailto:Michael@bantamhill.com) along with the check for the ad size and organization you are buying for by March 30, 2012. You can advertise for breeds besides Ameraucana in your ad. I will not cash checks until I have payment for an entire page of ads.

## Treasurer's Report

<b>ABC Checking Account, Central Trust Bank, Jefferson City, MO</b>	
<b>Opening Balance January 1, 2011</b>	<b>\$ 1735.41</b>
Income – January Dues, Directories, Donations, etc	0
Income – February Dues, Directories, Donations, etc	0
Income – March Dues, Directories, Donations, etc	0
Income – April Dues, Directories, Donations, etc	0
Income – May Dues, Directories, Donations, etc	0
Income – June Dues, Directories, Donations, etc	0
Income – July Dues, Directories, Donations, etc	0
Income – August Dues, Directories, Donations, etc	0
Income – September Dues, Directories, Donations, etc	0
Income – October Dues, Directories, Donations, etc	0
Income – November Dues, Directories, Donations, etc	0
Income – December Dues, Directories, Donations, etc	0
<b>Income Subtotal (opening balance + months)</b>	<b>\$ 0.00</b>
Expense - Postage	166.63
Expense – Office Supplies	144.17
Expense – Other: Memorials	0
Expense – Memberships, Advertisements	0
Expense – Bank Charges (return item fees)	0
Expense – National Meet Awards/Awards	0
Expense - Refunds	20.00
<b>Expense Subtotal</b>	<b>\$330.80</b>
<b>Ending Balance as of January 31, 2012</b>	<b>\$ 1404.61</b>
<b>PayPal Account January 31, 2012</b>	<b>\$ 2030.92</b>
PayPal Income	162.12
PayPal Purchases	0.00
<b>Total</b>	<b>\$ 3435.53</b>
Respectfully Submitted, Michael J. Muenks, Secretary/Treasurer	



## Buff Culling Tips, by John Blehm and Beth Curran via the Forum

*In this issue of the Bulletin I am trying something a little different. There are many topics on the Forum that could be interesting Bulletin articles. I hope you will enjoy my attempts as a "ghostwriter" for these conversations . . . Michael*

Question: Last year I dumped way too much feed into way too many birds for way too long and I cannot afford to do that again this year. I need to cull as many birds as possible as early as is practical. I need some culling tips for my buff Ameraucana. What should I be culling at an early age?

Figure 2



Response: Buff are based on EWh and they should hatch with flesh colored legs/shanks that darken as they mature like wheaten and blue wheaten legs/shanks do. If day-old buffs have slate or any other color legs/shanks other than flesh, they should be culled. Day-old buff chicks should have buff down everywhere and the more even the color of down the better. Figure 1 demonstrates appropriate leg/shank color and buff down. Cull any with cream colored heads as shown in Figure 2.

As the chicks mature their legs/shanks should not darken too fast. Any chicks that have legs/shanks that have darkened by three weeks should be considered for culling. It will take longer than three weeks for the legs/shanks of a buff chick based on EWh to begin to darken. Buff chicks that feather out with white in their wing feathers should be candidates for culling if better chicks exist as demonstrated by Figure 3.

Figure 3



The pictures are by John Blehm (Figures 1 and 2) and Beth Curran (Figure 3).

## Ameraucana Breeders Club Upcoming Meets

**March 31, 2012**

Special Meet, requested by Patty Pickard

Southeast Ohio Poultry Breeders Association, Washington County Fairgrounds, Marietta, OH

Contact:

Wyatt Adelsperger

1345 Windy Ridge Road

Vincent, OH 45782

**April 14, 2012**

Special Meet, placed by Jerry DeSmidt

Gateway Poultry Association, Bloomington, IN

Contact:

Phyllis Saucerman, [psaucer@ccrtc.com](mailto:psaucer@ccrtc.com)



Featuring nest boxes  
With a 21st century design!

### Fowl Stuff Nest Boxes



Go to [FowlStuff.com](http://FowlStuff.com) for all the details and to order or order from your favorite poultry supply company.

### Farmer Designed - Hen Tested!



Blue and Lavender Chicks by  
Jeannine McKee

Larry Clionsky  
Ameraucana

Black, Blue, Blue, Wheaten,  
Wheaten,  
White and Buff  
Large Fowl Ameraucana

Hatching Eggs and  
Day-Old Chicks

Larry Clionsky  
9 Zion Church Rd  
Grantville, PA 17028-9651  
(717)469-7509  
[Lclionsky@yahoo.com](mailto:Lclionsky@yahoo.com)



Fayetteville, AR

Large Fowl Black, Blue,  
Splash & Mottled  
Ameraucana  
HATCHING EGGS

Focusing on egg qualities  
& foraging capabilities,  
Award winning chicks

[rose@masoncreekfarm.com](mailto:rose@masoncreekfarm.com)



## Getting to Know Will Morrow, by Jes Kemp

*In this issue of the Bulletin we continue the theme of trying something new. The Club has many members who are very interesting. I have wanted to do member features for several years and one our new members, Jes Kemp, asked what she could do to help. One thing led to another and Jes completed what is the first of what I hope will be many introductions of ABC members to the Club at large. Thank you to both Jes and Will for their efforts to bring this article to the Club.*



Will Morrow is the owner of Whitmore Farm in Frederick County, Maryland. His operation is Certified Organic and specializes in heritage and American breed livestock raised outdoors on pasture.

**JK- How long have you been raising chickens and what made you choose Ameraucana?**

WM- Chickens were the first animals we brought onto the farm in 2003. Of course I made the same mistake every newbie does and ordered Ameraucana from Murray McMurray not realizing they were mutts. But I look back at them as my training wheels. I chose Ameraucana because of their unique egg color. Who wouldn't want beautiful sky blue eggs?! And, they sounded like better production birds than Araucana. Being a practical man, I know I wanted a bird that would lay enough eggs to pay for its keep.

**JK- Please tell us about your flock. Approximately how many Ameraucana do you have? Which varieties do you raise? Are the Large Fowl or Bantam? Approximately how many eggs do you hatch in a typical season?**

WM- I maintain a breeding colony of about 100 hens and 10 cocks. I'm hoping to double that over the next year. I raise large fowl Black and Blue, which means of course, I have some Splash running around as well. In 2011 I hatched 597 hundred chicks. I'm hoping to increase that this year.



**JK- Can you please tell us what your goals are in your breeding program?**

WM- My top priority is to increase egg size and maintain good egg color. I'm making some progress, but it is a slow process.

**JK-What has been the biggest challenge that you have faced in your breeding program?**

WM- Season before last, for the first time, a Marans rooster from a neighboring pasture, had illicit liaisons with some of the ladies in the Ameraucana pasture. I maintain different breeding colonies in different pastures. Ameraucana must have the black extension gene because it masked the copper markings associated with Black Copper Marans in the offspring. So, when I selected my breeders to retain for the following season, I kept the largest and nicest specimens that met the APA standard. One of the cockerels I retained must have carried the gene for Black



## Getting to Know Will Morrow, continued . . .

Copper (Brown Red) although it looked solid black. The only way I knew was because the following season, I started to get about 5% of my hatch growing out with copper hackles and wing bows. I had to cull a lot of birds and apologize to some customers. It set back my numbers and my breeding program. I was very upset.

JK- Is there some tip or information that you wish you had known in the beginning that you didn't learn until later that you are willing to share with our readers?

WM- There are advantages to working with a variety that can be sexed early on. If I were to start over, I would probably go with Silver or Wheaten for that reason alone. I have to grow out about 100 cockerels to get 100 hens. It does allow me to really select the best male specimens for my breeding program, but it is not very economical. I know that Ameraucana are supposed to be a dual purpose breed, but have you ever butchered a 5 month old cockerel? Not a lot of meat there (unless of course, you cross it with a Marans). The advantage of going with a solid color like the Black, Blues, Buff, or White is that they are a lot easier to get the color pattern correct! lol



JK- In your opinion, what is the overall state of the Ameraucana as a breed? Where do you think the breeders of the ABC have made the most progress and what areas still need the most work?

WM- I think the overall state of the Ameraucana breed is strong with bright future! Everybody loves the blue eggs and their pea comb, muffs and beard make them very good for cold climates. Demand for chicks and breeding stock are strong and continue to increase. I'm surprised that the big hatcheries haven't caught on to the value of pure bred Ameraucana. The fact that you can't get pure bred Ameraucana at the majority of hatcheries works in our favor as

independent breeders and sellers of chicks and stock. I'd like to see more Silver Large Fowl and Buff Large Fowl. I worry with people excited about new color varieties like Lavender and Black Gold that some existing varieties will decline in number.

JK- Is there anything else you would like to share with us?

WM- Keep up the good work on the newsletters! I save them for a breed club table display at our annual local poultry show in the fall, the Maryland State Poultry Fancier's Association, first weekend every November. People love them and it helps to sign up new members. This is the best breed club of all the different breed clubs I belong to! The patches, egg color charts and other club items really help to promote the breed.

If you would like to be interviewed for an upcoming issue of our newsletter, please contact Jes Kemp [dixielanddogs@aol.com](mailto:dixielanddogs@aol.com).



Smith Ameraucana

We are accepting 2012 orders for large fowl day-old Ameraucana chicks in black, blue, splash, wheaten, blue wheaten, splash wheaten, lavender, and lavender-splits & large fowl day-old Single Comb Rhode Island Reds

Hatching  
March through May 2012

Paul & Angela Smith  
2175 CR 224  
Gainesville, TX. 76240

[psmith@ntin.net](mailto:psmith@ntin.net)  
940-768-8405



One of Will Morrow's  
blue Ameraucana

## Meet Reports

### Michigan Poultry Fanciers Fall Fowl Fest

State Meet, October 8-9, 2011, Reported by Matt Boensch

#### 15 large fowl were shown and judged by Gary Overton

BV black H by Jeanne Trent  
 RB, BV blue wheaten K by Zakayah McCanham  
 BV buff K by John Blehm, out of 2  
 BB, BV silver P by John Blehm, out of 4  
 BV wheaten K by Kathy and Harvey Pearl, out of 4  
 RV wheaten K by Kathy and Harvey Pearl

#### 20 bantams were shown and judged by Gary Overton

BV blue wheaten H by Jeanne Trent  
 BV buff C by John Blehm, out of 4  
 RV buff P by John Blehm  
 BV silver P by John Blehm  
 RV silver K by John Hammar  
 BV wheaten P by Jeanne Trent, out of 6  
 RV wheaten K by Jeanne Trent  
 BV AOV lavender P by Candy Prince, out of 6  
 RV AOV lavender K by Candy Prince

#### 7 large fowl were shown in the Junior Show and judged by Gary Overton

BV blue H by Rene Fleming  
 BV blue wheaten K by Zakayah McCanham  
 BV silver H by John Hammar, out of 3  
 RV silver H by John Hammar

#### 1 bantam was shown in the Junior Show and judged by Matt Lahmon

BV silver K by John Hammar

### Cape Fear Poultry Association

North Carolina State Meet, December 10, 2011, Reported by Carolyn Lynn

#### 4 large fowl were shown and judged by Paul Gelroy

RB, BV blue wheaten K by Beth Curran  
 BV buff P by Beth Curran  
 BB, BV white H by Amy Colbert, **Champion Ameraucana**  
 RV white C by Amy Colbert

#### 2 large fowl were shown in the Junior Show and judged by Lloyd Thomas Kane

BV black C by?  
 BV blue wheaten P by?

### CRYSTAL CREEK

BREEDING BETTER LAVENDERS



We're working hard to produce some of the finest quality lavender Ameraucana available.

- ✓ Hatching eggs
- ✓ Chicks
- ✓ Started juveniles
- ✓ Pairs/trios

**CRYSTAL CREEK**

**713-252-1828**

[crystalcreekqh@sbcglobal.net](mailto:crystalcreekqh@sbcglobal.net)



### Don Cash

**White and Silver  
 Ameraucana Bantams  
 Black LF Ameraucana**

Also Black Plymouth Rock  
 and Silver Leghorn  
 bantams

Limited Stock available

8922 Robinson Church Road  
 Charlotte, NC 28215

704 567 7798  
[drccash@yahoo.com](mailto:drccash@yahoo.com)

## Meet Reports, continued . . .

### Oklahoma State Poultry Federation

South Central District Meet, December 10-11, 2011, Reported by Norma Padgett

10 large fowl were shown and judged by Dwayne Jonas

BB, BV black P by Aaron Hickson, out of 7, **Champion Ameraucana**

RV black K by Rachael Snider

RB, BV blue wheaten K by Larry Snider, **Reserve Champion Ameraucana**

BV wheaten K by Larry Snider

RV wheaten K by Rachael Snider

1 bantam was shown and judged by Dwayne Jonas

BB, AOV Lavender P by Aaron Hickson

### Blue Bonnet Classic

Texas State Meet, January 7, 2012, Reported by Claudia Choate

10 large fowl were shown and judged by Steve Beaty

BB, BV black P by Aaron Hickson, out of 7, **Champion Ameraucana**

RB, RV black K by Aaron Hickson, **Reserve Champion Ameraucana**

BV blue H by Tommy?

BV white K by Ruth Caron

BV AOV K by Aaron Hickson

2 bantams were shown and judged by Steve Jones

BB, BV, AOV Lavender K by Aaron Hickson

RB, RV, AOV Lavender P by Aaron Hickson

3 large fowl were shown in the Junior Show and judged by James Cooper

BV blue P by Michael Schwartz

BV white P by Michael Schwartz

RV white P by Michael Schwartz

## Ameraucana Breeders Club Upcoming Meets, continued . . .

### May 5-6, 2010

Special Meet, requested by Connie "Jean" Ribbeck

Rocky Mountain Poultry Association, Hamilton, MT Fairgrounds, Meet 1

Contact:

Jamie Rensmon, (406)443-4347, [rensmon@bresnan.net](mailto:rensmon@bresnan.net)

3785 Traufer Ave

Helena, MT 59602

### June 2, 2012

Special Meet, requested by Mike Gilbert

Coulee Region Poultry Club, Trempealeau County fairgrounds, Galesville, WI

Contact:

Mike Gilbert

W5171 Baker Road

Holmen, WI 54636

[info@redstagacres.com](mailto:info@redstagacres.com)

## Tall Tailfeathers Ranch

*Royce E. Van Blaricome*

**Breeder & Exhibitor of LF  
Wheaten, Blue Wheaten  
and Splash Wheaten  
Ameraucana**

**Also Barnevelders,  
Buckeyes, Welsummers**

**Pekins, Swedish Blues,  
White Runners**

**and Pilgrim geese.**

**Call (360) 691-6261 or  
email**

**[tailfeatherz1@msn.com](mailto:tailfeatherz1@msn.com) for  
info**



Wheaten (left) and Blue Wheaten (right) chicks feeding by Royce Van Blaricome



**Welcome to our  
New Members!**

Travis Carrier, NY

Seamus Begley, CA

Christie Gibson, HI

Paulo Espinoza, CA

Beverly Fledderjohann  
, OH

Ari Katz, MD

John Mesich, ME

Carl Mitchell, NC

Shellie Ross, FL

Trisha Smith, IA

Roy, Karen, and  
Rachael Snider, AR

Janie Vogt, MT



Puffy Cheeks  
By Cindy Aultman

## Ameraucana Breeders Club Upcoming Meets, continued . . .

**September 22-23, 2012**

**Wisconsin State Meet**, placed by Jerry DeSmidt

Wisconsin International, Portage, WI

Contact:

Terry Lund

[wipoultryclub@yahoo.com](mailto:wipoultryclub@yahoo.com)

**October 6, 2012**

Special Meet, placed by Jerry De Smidt

West Central Wis. Pigeon & Poultry Club "Red Cedar Showdown", Menomonie, WI

Contact:

Dan Paff, [juddan@wwt.net](mailto:juddan@wwt.net), (715)723-2750

6977 County Hwy N

Chippewa Falls, WI 54729

**October 27, 2012**

**National Meet**, placed by Paul Smith

Missouri State Poultry Association Fall Double Show, Meet 1

Sedalia, MO

Contact:

Bernita Miller, [bmiller@iland.net](mailto:bmiller@iland.net)

**October 27, 2012**

**Missouri State Meet**, requested by Michael Muenks

Missouri State Poultry Association Fall Double Show, Meet 2

Sedalia, MO

Contact:

Bernita Miller, [bmiller@iland.net](mailto:bmiller@iland.net)

**November 10-11, 2012**

**State Meet**, requested by Patty Pickard

Ohio National

Columbus, OH

Contact:

Eric Markley, 419-568-7402, Cell 419-303-6909, [markley@ohionational.org](mailto:markley@ohionational.org)

## Ameraucana Breeders Club Board of Directors

**President, Connie "Jean" Ribbeck**

PO Box 461, Newman Lake, WA 99025 [jribbeck@q.com](mailto:jribbeck@q.com) (509-226-3833)

**Secretary/Treasurer, Michael Muenks**

33878 Hwy 87, California, MO 65018-3911 [michael@bantamhill.com](mailto:michael@bantamhill.com) (573)796-3999

**Director-North Central, Jerry De Smidt**

N912 Hill Road, Pulaski, WI 54162 [jwoodhaven@aol.com](mailto:jwoodhaven@aol.com) (920)833-9772

**Director-Northeast, Harold Knapp**

5299 Jerico Rd, East Bethany, NY 14054 [knapp@2ki.net](mailto:knapp@2ki.net) (585)343-0408

**Director-South Central, Paul Smith**

2175 Country Road, Gainesville, TX 76240-0401 [psmith@ntin.net](mailto:psmith@ntin.net) (940)768-8405

**Director-Southeast, Tina Dinkins**

309 Rogers Ridge Road, Kingston, TN 37763 [tinadinkins@comcast.net](mailto:tinadinkins@comcast.net) (865)376-4646

**Director-West, Jeanine McKee**

1960 South Fir Street, Canby, OR 97013 [barterazia@hotmail.com](mailto:barterazia@hotmail.com) (503)953.0488